

OUR PAROO

Our plan for
the future

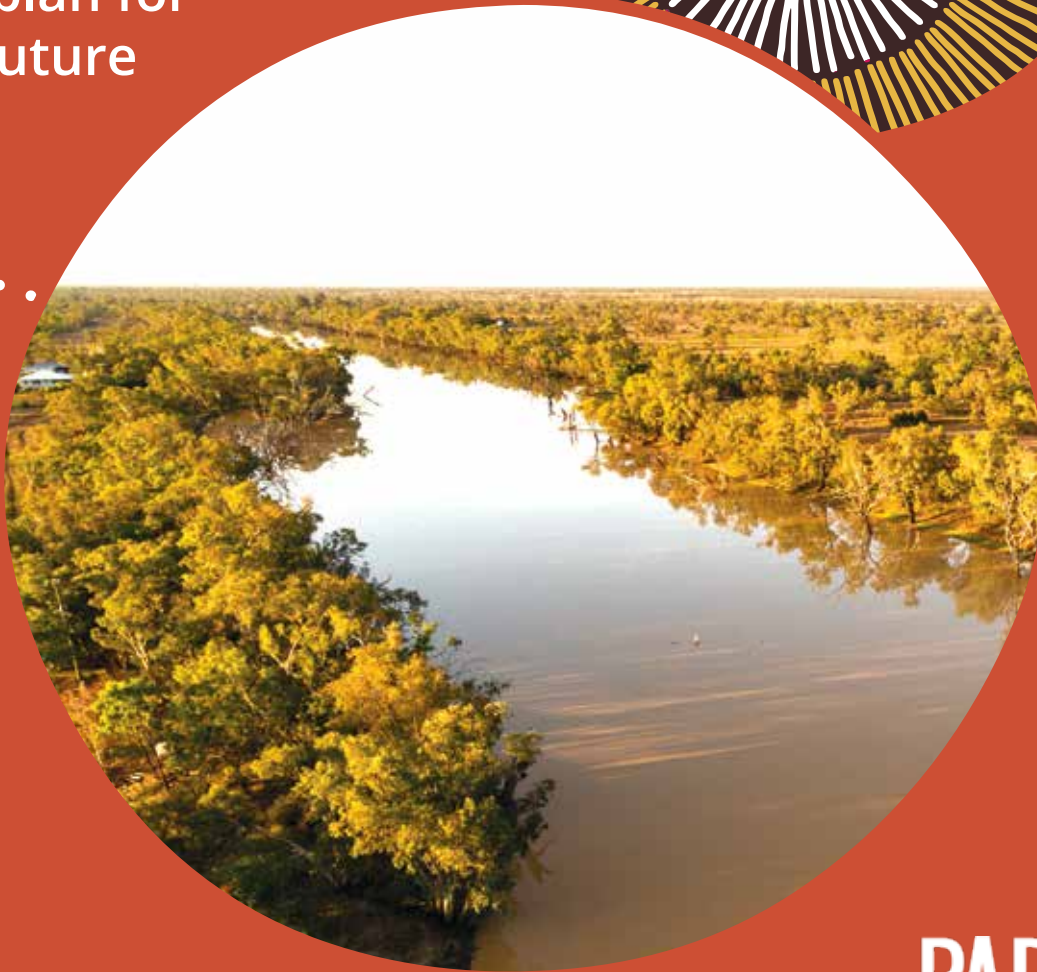




Table of Contents

Paroo Snapshot	3
About Paroo	4
Our Values	5
Priority Areas	6
Our Paroo of the Future (Vision and Mission Statements)	7
Strategy in Action	8
Strategic Pillars Overview	10
Excellence in Governance	12
Our People and Strong Communities	13
Prosperous Economy	14
Environmental Sustainability	15

Acknowledgement of Country

We acknowledge the traditional owners and custodians of Country throughout the Paroo Shire and acknowledge their continuing connection to land, waters and community. We pay our respects to the people, the cultures and the Elders past, present and emerging.



Paroo Snapshot



POPULATION
1,679



GRP
\$109M



TRADITIONAL
GROUPS

Kooma,
Kunja,
Kullilli,
Budjiti,
Mardigan,
Bidjara,
Murrawarri.



ACCESSIBLE AND CONNECTED
Regional Airport and
Digitally Connected



AVERAGE MEDIAN
HOUSE PRICE
\$100,000

TOP 5 INDUSTRIES



Agriculture



Health
Care



Public
Administration



Mining



Tourism

Source: SWQROC Boundless Prospectus and ABS Census, 2021.



About Paroo

The Paroo Shire encompasses the communities of Eulo, Cunnamulla, Wyandra and Yowah. Cunnamulla is the administrative centre of the Paroo Shire and is located on the Warrego River in far west Queensland.

The word 'Cunnamulla' means 'long stretch of water' in the language of the Kunja people. There are seven (7) traditional groups located in and around Cunnamulla including Kooma, Kunja, Kullilli, Budjiti, Mardigan, Bidjara and Murrawarri.

Paroo Shire covers 47,633 sq km and is situated on the crossroads of the Balonne and Mitchell Highways. The Shire has vast cultural diversity as is known as a welcoming and friendly Shire with a population of approximately 1,679 people.

The Shire boasts two different river systems with the Warrego River running through Cunnamulla and the Paroo River running through Eulo. The rivers are places of cultural significance for Indigenous peoples and a popular spot for locals and visitors.

The Shire boasts diverse eco-systems and is an area rich in history. The area is known for its authenticity and uniqueness with many local characters and identities adding to the charm of living and visiting the Paroo Shire.

Agriculture is a key industry where beef, goats, prime lamb and wool production, apiary, wildlife harvesting and opal mining are key economic drivers. Additional industries include carbon-farming and a growing tourism industry. There is a strong small business sector with career opportunities in administration, education, allied health and social services, as well as construction and agricultural contracting.



Our Values

Integrity

We will be open and transparent, respectful, and accountable.

Efficiency

We will use best practice frameworks and deliver services in an efficient and timely manner.

Continuous Improvement

Our efforts to improve, respond to change and build our working capacity will be the basis of all that we do.

Priority Areas

1 Communication

We will strive to be inclusive and wide-reaching in our communications with community. Our community members will be given the opportunity to participate in meaningful, appropriate, and timely community engagement.

2 Organisational Performance

We will improve organisation performance and function through improved systems, transparency, a 'one team' approach and leading with optimism.

3 Sustainability

We will strive for environmental sustainability through a balanced approach of caring for our natural environment, conserving natural resources and sustainable industry development. We will lobby and advocate for improved collaboration on environmental policy impacting our lands, waters and cultural heritage.

4 Cultural recognition and celebration

We will promote and celebrate diversity and all cultures. We will continue to work towards a culture of shared understanding using a co-designed model in our approach.

5 Learning and Igniting Ideas

Locally based learning and skilling opportunities will be harnessed. Connecting with others to ignite ideas and develop innovative approaches in jobs creation and new business opportunities.

Our Paroo of the Future

Our people will be empowered with the knowledge and skills to be the best we can be. We will learn in community, tap into great ideas, and build our capacity.

We will sustain our prospering businesses and industries and develop new opportunities.

Our communities will be great places to live. We will strive to maintain ecological balance in our natural environment and encourage sustainable industry development and the wellbeing of current and future generations.

We will continue to be a welcoming community where diversity is accepted, and we seek to promote and celebrate a partnership between traditional owners and Council.

We will harness our unique social capital to grow strong into the future.

Vision Statement

*Live well, grow strong
and build prosperity.*

Mission Statement

*Co-design local solutions,
harness ideas, adapt
and innovate.*





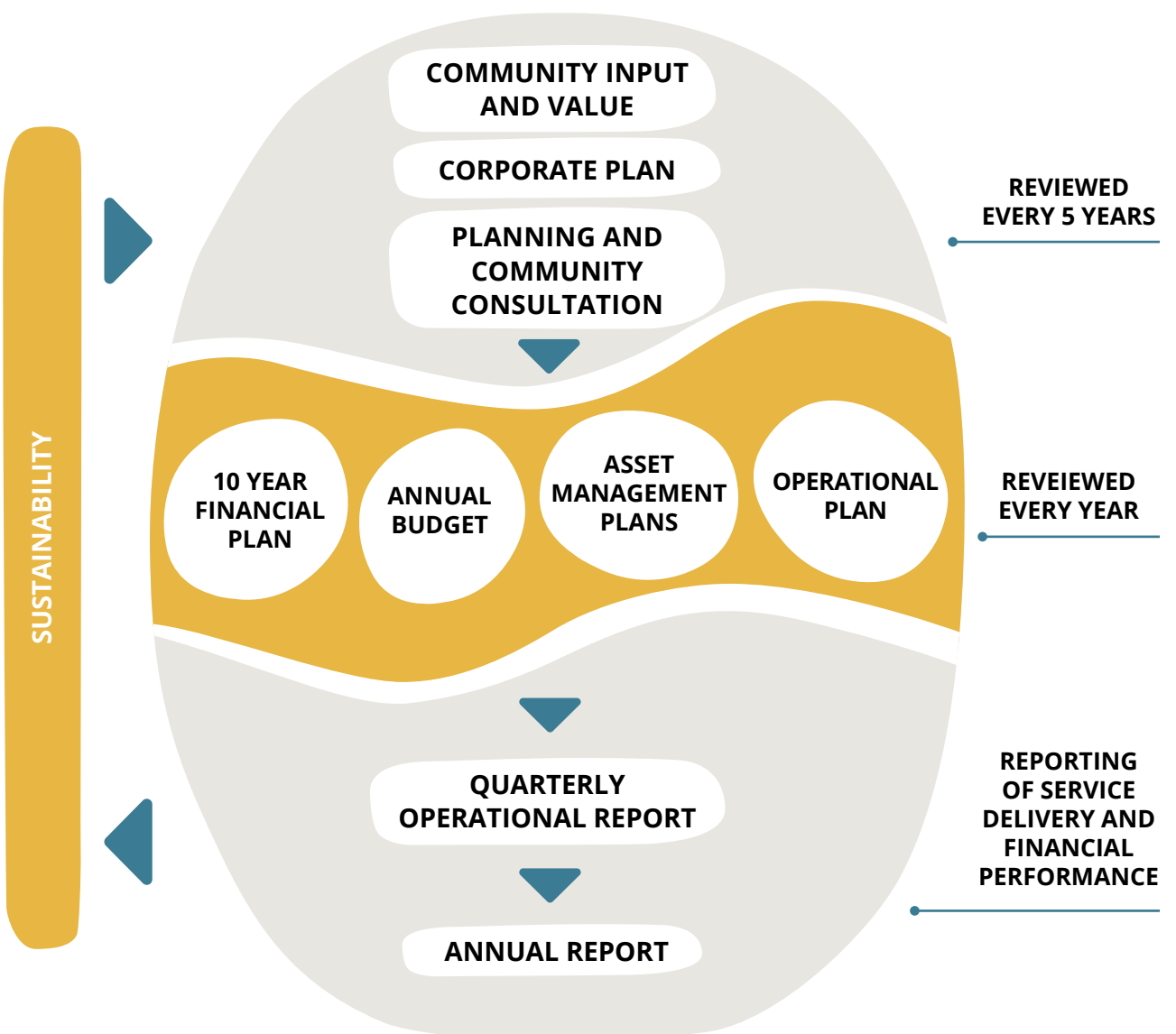
Strategy in Action

This Corporate Plan has been broken down into four (4) strategic pillars.

- 1 Excellence in Governance
- 2 Our People and Strong Communities
- 3 Prosperous Economy
- 4 Environmental Sustainability

Refer to the summary on page 10-11 and each pillar's details outlined on pages 12-15.

To deliver the strategy, program area actions are developed as outlined in Council's Operational Plan. Council's role may vary from advocating and lobbying, monitoring, or playing a direct role in actioning the strategic areas outlined in this plan. Every quarter, performance against these actions will be reported upon. Refer to the Operational Plan and the Quarterly Operational Plan Report for information on performance and delivery of this Plan.



Strategic Pillars



Excellence in Governance

Accountable leadership and strong governance with integrity and accountability for optimum organisational performance.



Our People and Strong Communities

Build the capabilities of our people through the facilitation of ongoing learning and skilling opportunities and the provision of welcoming and inviting spaces with great facilities.



Prosperous Economy

To support our existing businesses and industries and to nurture new opportunities to grow and sustain a prosperous economy.



Environmental Sustainability

Protect, enhance, and sustain the environment with a balanced approach to sustainability and economic growth for longevity.



Photo courtesy of Josiah Kotzur and Lisa van Heijningen.

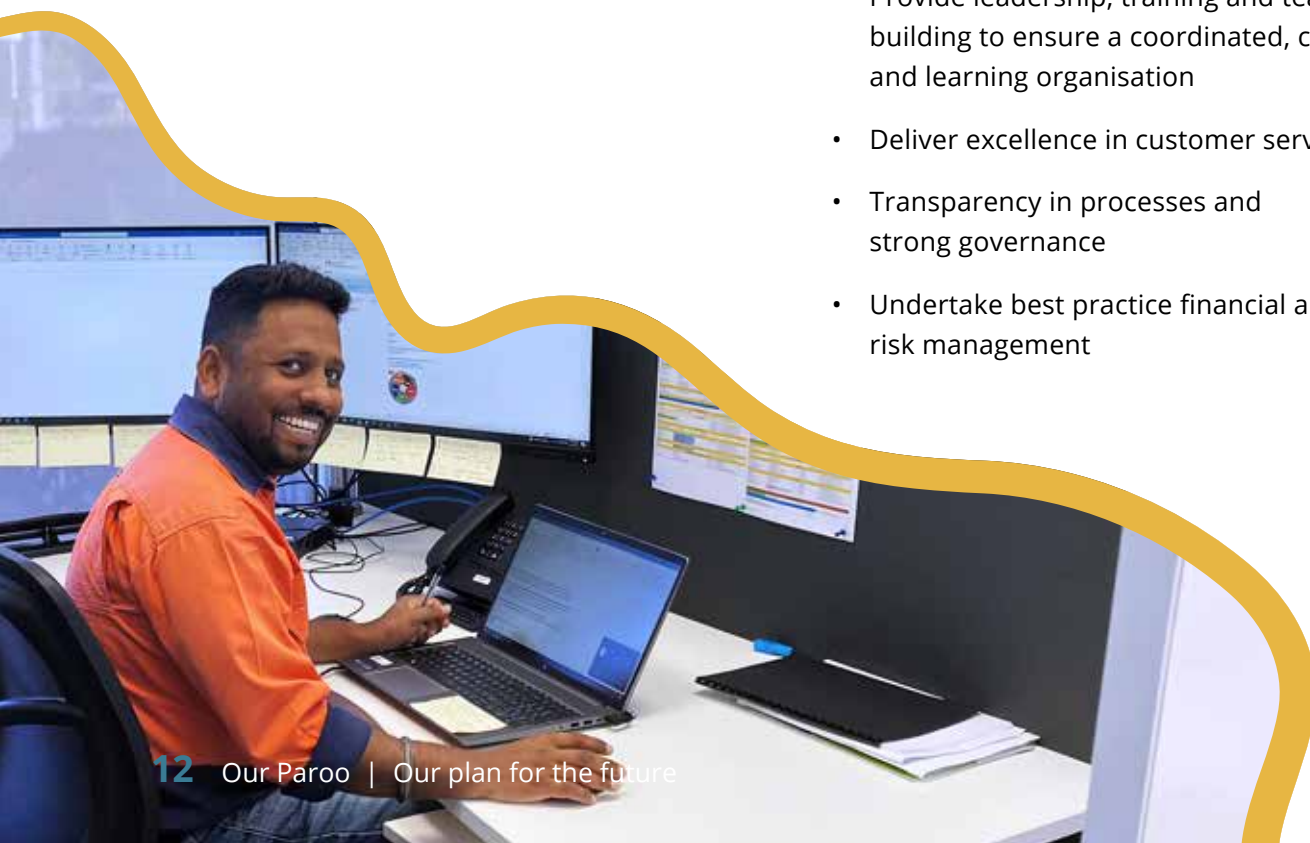


Excellence in Governance

Accountable leadership and strong governance with integrity and accountability for optimum organisational performance.

Program Areas

- Provide a safe workplace including wellbeing support
- Foster and promote a culture built on a shared vision with high levels of community collaboration
- Enable strategic implementation with high levels of accountability
- Provide leadership, training and team building to ensure a coordinated, connected and learning organisation
- Deliver excellence in customer service
- Transparency in processes and strong governance
- Undertake best practice financial and risk management





Our People and Strong Communities

Build the capabilities of our people through the facilitation of ongoing learning and skilling opportunities and the provision of welcoming and inviting spaces with great facilities.



Program Areas

- Celebrate cultural diversity, history and traditions
- Promote and celebrate partnerships between traditional owners and Council
- Provide inviting spaces and facilities to meet community needs
- Vibrant libraries and inclusive flexible learning and skilling
- Support for leadership programs and youth pathways
- Foster and promote active, safe and healthy communities



Prosperous Economy

To support our existing businesses and industries and to nurture new opportunities to grow and sustain a prosperous economy.



Program Areas

- Promote and support a sustainable and diverse agricultural industry
- Grow and enhance tourism
- Nurture and build the overall business and industry sector
- Advocacy and support for a digitally-enabled Shire
- Workforce development and attraction for a skilled workforce
- Lobby and partner for safe and efficient transport networks
- Advocate for locally based service delivery



Environmental Sustainability

Protect, enhance, and sustain the environment with a balanced approach to sustainability and economic growth for longevity.

Program Areas

- Consult with Indigenous peoples and Traditional Owners regarding sustainability planning
- Foster a shared vision for the environment through collaborations with all land managers
- Best practice biosecurity and pest and land management
- Protect and enhance waterways, water sources and manage town water services
- Minimise waste, increase recycling and pursue renewable energy
- Effective disaster management planning and response





PAROO
SHIRE.
live like a local

Paroo Shire Council
07 4655 8400
council@paroo.qld.gov.au
PO Box 75, Cunnamulla Qld 4490